



WHOLE PERSON CARE

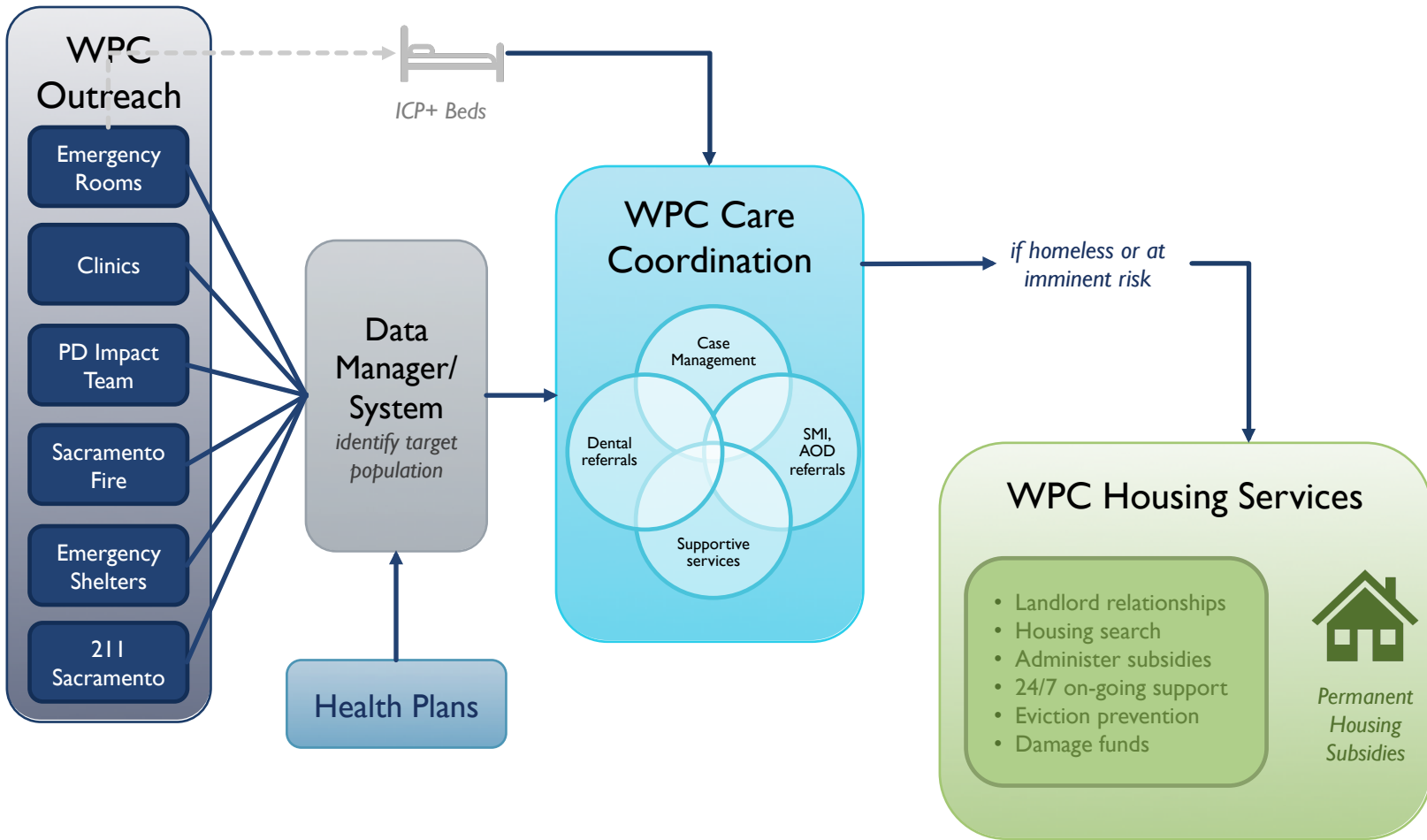
SACRAMENTO PILOT PROGRAM



WHAT IS WHOLE PERSON CARE?

Statewide pilot program for vulnerable Medi-Cal patients to improve health outcomes and reduce utilization of high-cost services





WHOLE PERSON CARE City Approach

- ✓ Integrate & Expand Outreach
- ✓ Develop Data Sharing Capacity
- ✓ Comprehensive Care Coordination
- ✓ On-Going Housing Support

Align

Align Whole Person Care services with homeless Point-in-Time needs

Integrate

Integrate Whole Person Care with existing resources:

- *City General funded homeless programs*
- *Continuum of Care programs via Sacramento Steps Forward*
- *SHRA housing programs*
- *County systems and services*

Catalyze

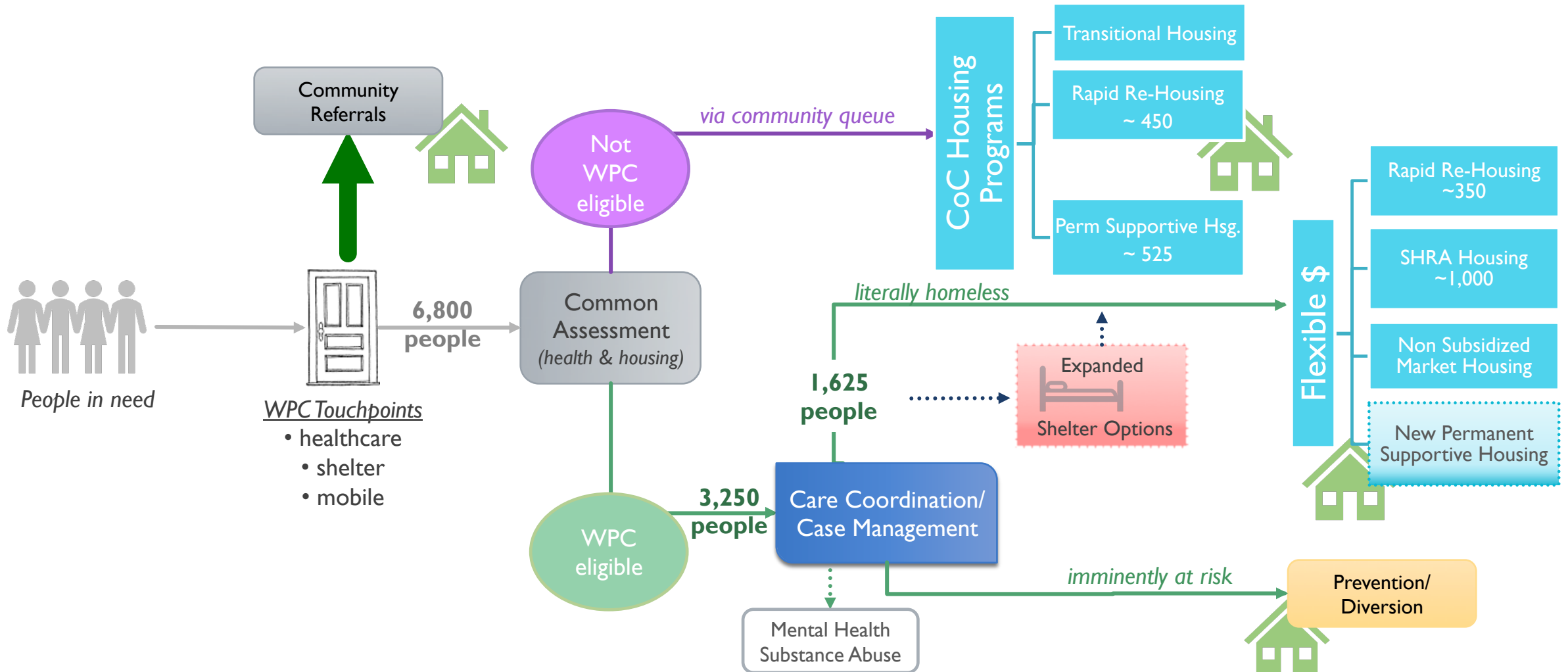
Use Whole Person Care to leverage funding and programs to increase capacity throughout the entire homeless system of care

WHOLE PERSON CARE

City Approach

WHOLE PERSON CARE

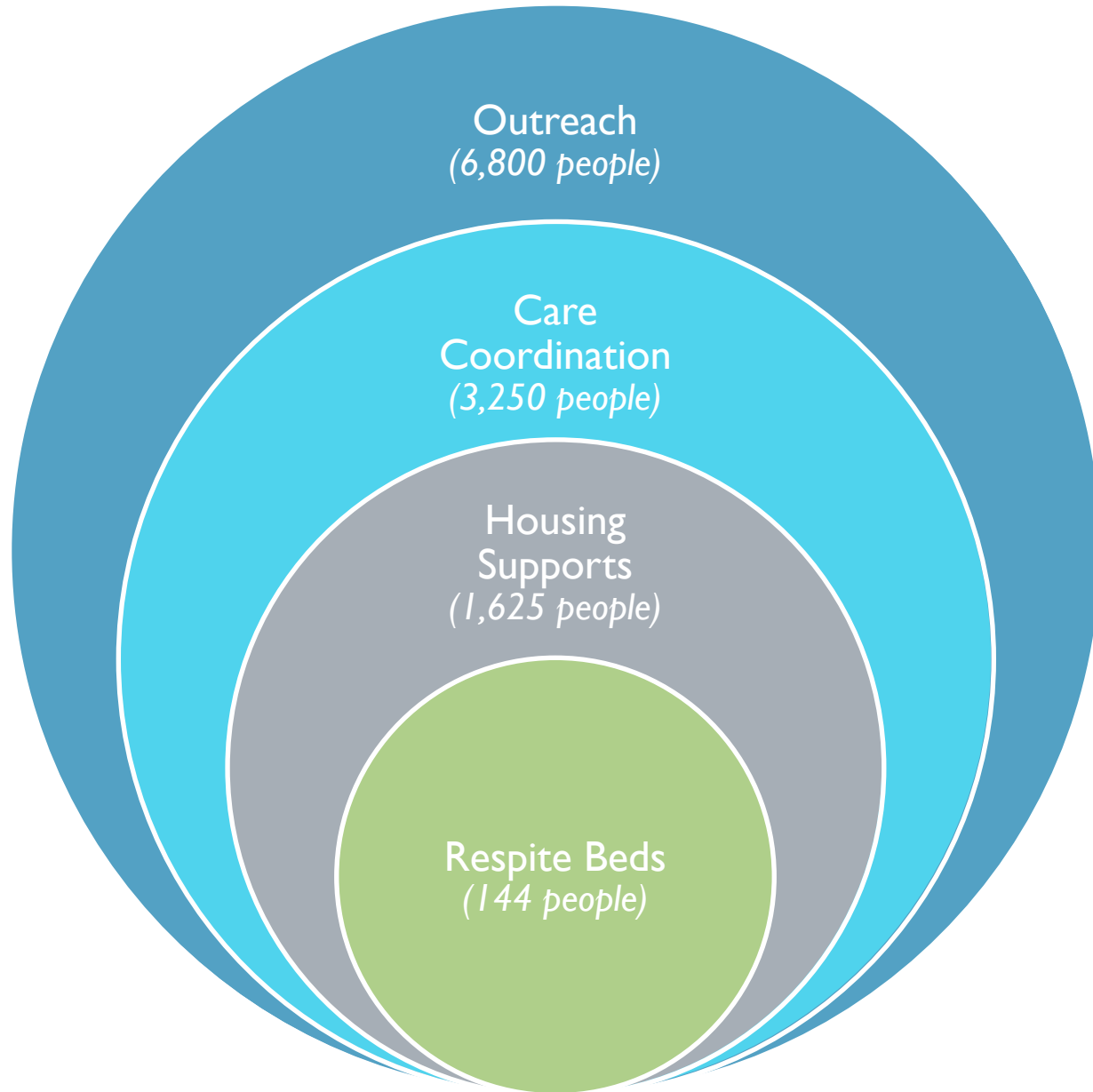
Part of a Larger System



Over three years, Whole Person Care will:

- *Increase outreach capacity by 2-3 times*
- *Reduce case management loads by approximately 75%*
- *Leverage approximately 2,300 housing opportunities*

WHOLE PERSON CARE
Part of a Larger System



WHOLE PERSON CARE Service Oriented Framework

WHOLE PERSON CARE

Data, Reporting and Metrics

Federal matching dollars dependent on:

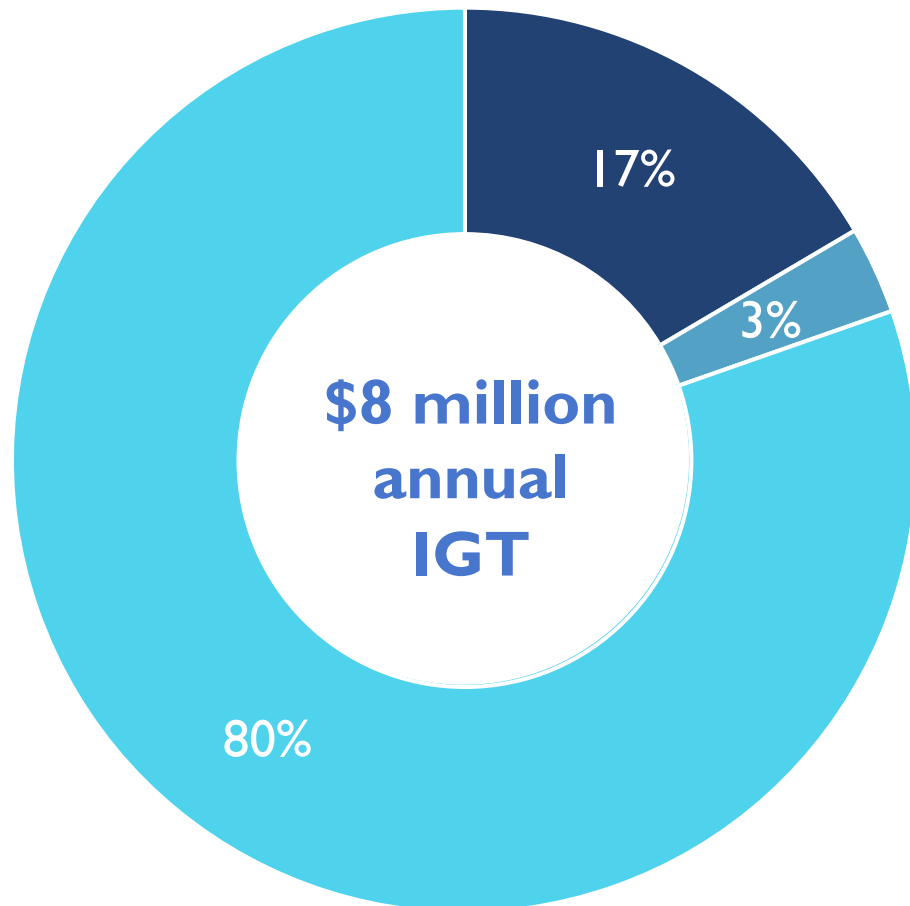
1. Providing services to identified number of Medi-Cal eligible patients; and
2. Providing regular data (quantitative & qualitative) on program delivery and patients served; and
3. Meeting pre-determined health and housing outcome metrics.

WPC Funding to Support Data and Metrics

Care Coordination Software	Community Resource Database	Data Analyst Staffing and Consultants	Data Sharing Incentives
----------------------------------	-----------------------------------	---	----------------------------

WHOLE PERSON CARE

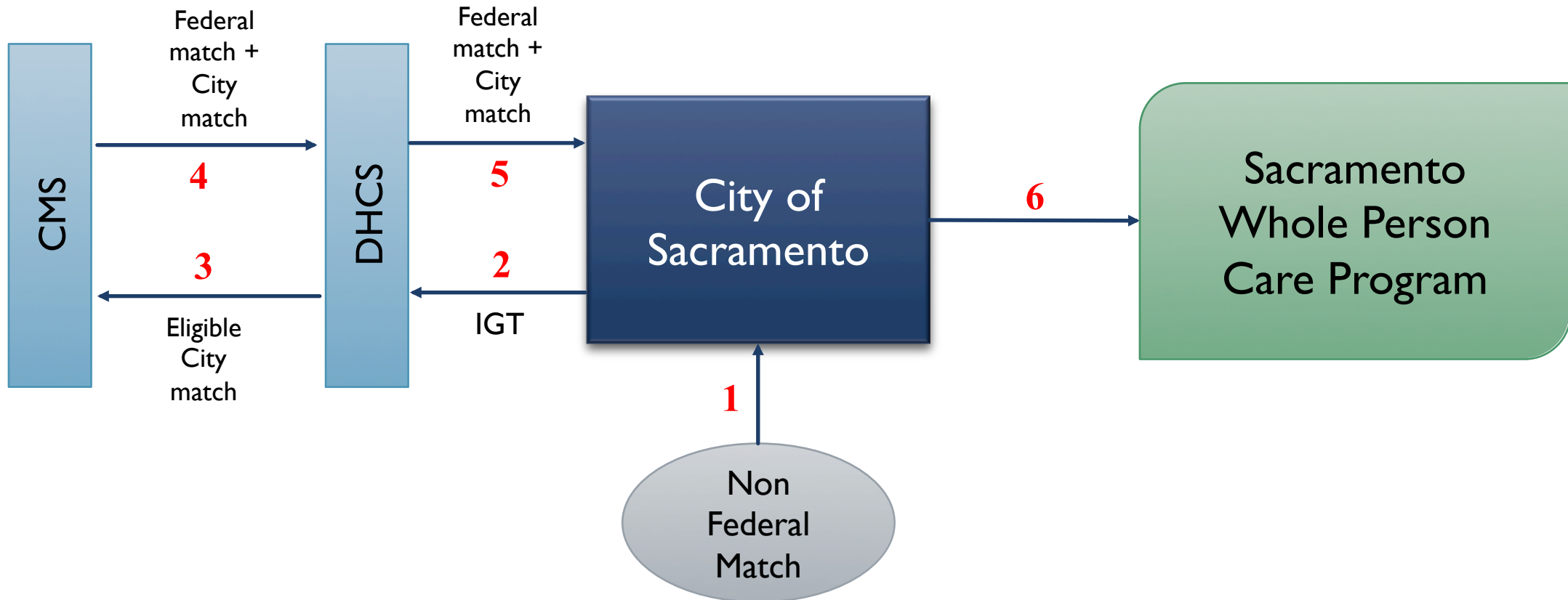
Funding Partners



- ✓ Existing City contracts for outreach and case management services
- ✓ Portion (annualized) of the City's one-time housing set-aside
- ✓ Existing contracts for navigation, care management and respite beds from Health Care Systems

WHOLE PERSON CARE

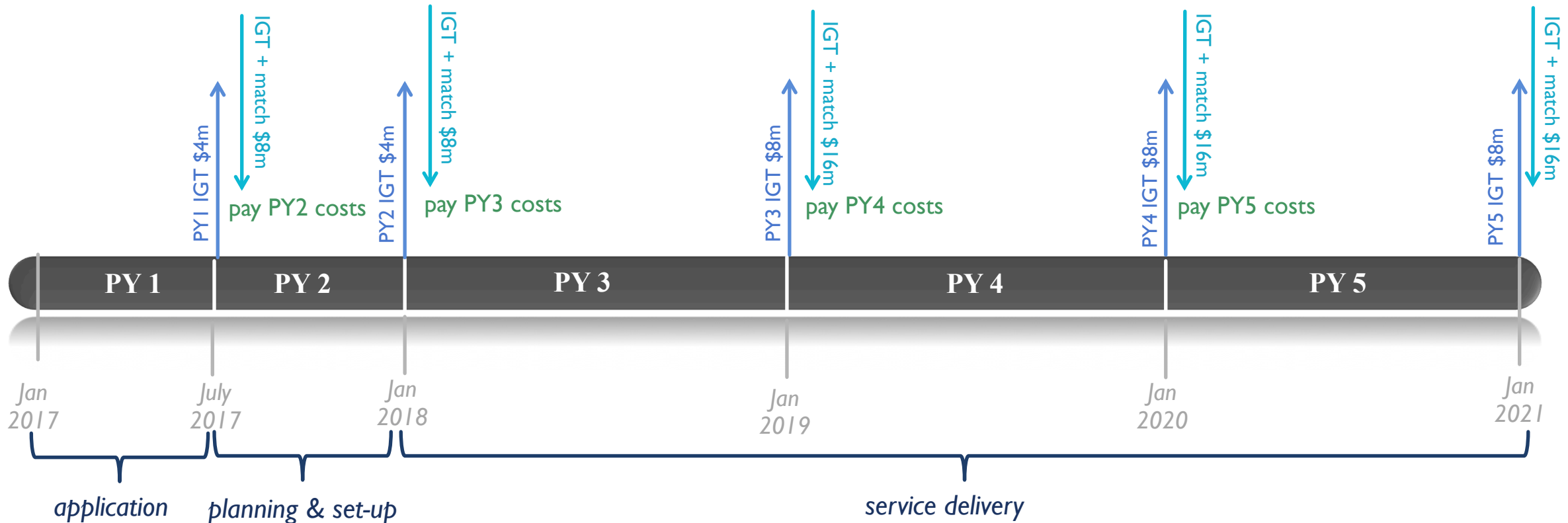
Funding Process

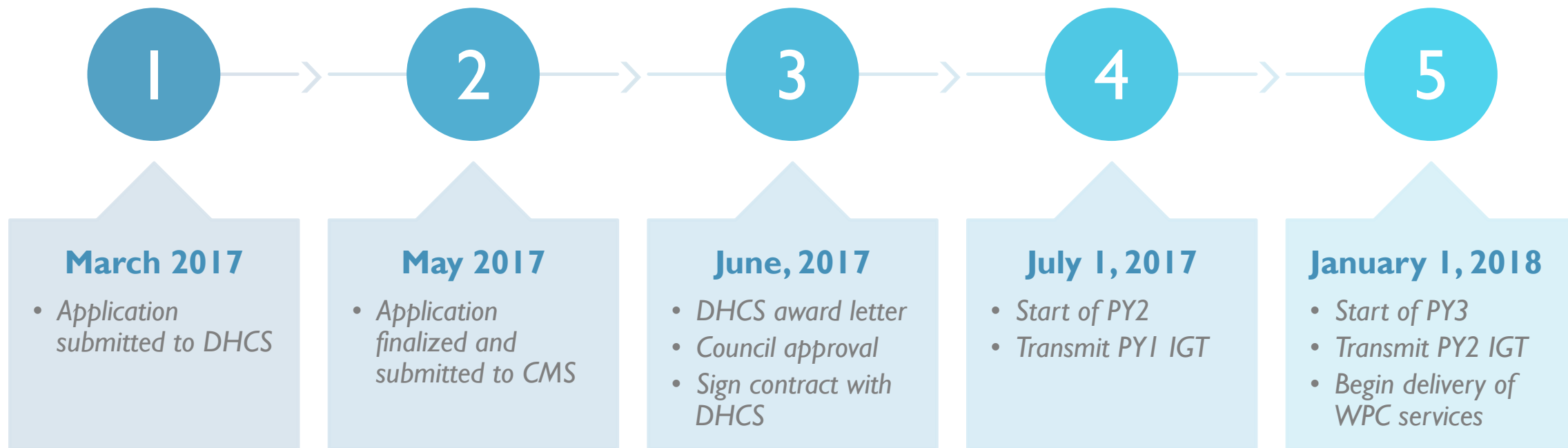


WHOLE PERSON CARE

Flow of Funding

IGT funding from prior program year pays for services delivered in current program year





WHOLE PERSON CARE

Implementation Timeline

Funding Obligations

- *Enter into contracts with funding partners*
- *Transmit PYI IGT to DHCS (August)*

Staffing

- *Establish internal City staffing lead*
- *Hire consultant staffing lead*

Program Implementation

- *Begin forming governance committees*
- *Issue RFP(s) for service providers*

WHOLE PERSON CARE
Next Steps